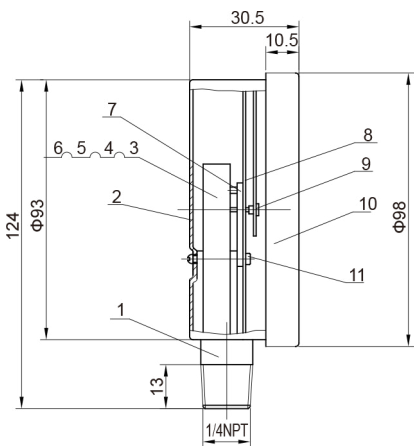


Pressure Gauge

Model: FIS - PG

Version 1.01
July 2025 release

Pressure Gauge
Model: FIS-PG



Technical Features

- Pressure Gauge for Fire Protection system
- Designed and manufactured in accordance with FM2311
- Test Standard: FM2311
- Working Temperature Range: 0-80°C / 32-176°F
- Wiring Inlet Size: 1/4" NPT
- Nominal Pressure:
0-300PSI
0-600PSI
- Approvals: FM approved

Material List		
No	Name	Material
1	Base	HPb59-1
2	Watchcase	1008
3	Spring Pipe	Qsn0.8-2
4	Rivet	HPb59-1
5	Connecting Rod	H62
6	Free End	H62
7	Inner Core Combination	HPb59-1
8	Dial Plate	HPb59-1
9	Pointer Component	Al
10	Watchcase	PC
11	Rivet Column	HPb59-1



Gate 2, Aljada Logistics Area,
Behind Arada Project Management
Office, Near Airport Road,
Muweilah, 22436, Sharjah

rhinotek.ae

